

STANDARD DEPARTURE CHART
INSTRUMENT(SID) - ICAO

TRANSITION ALT 14 000
TRANSITION LVL FL 140

SACHEON DEP 135.4
YEOSU TWR 122.5
240.9

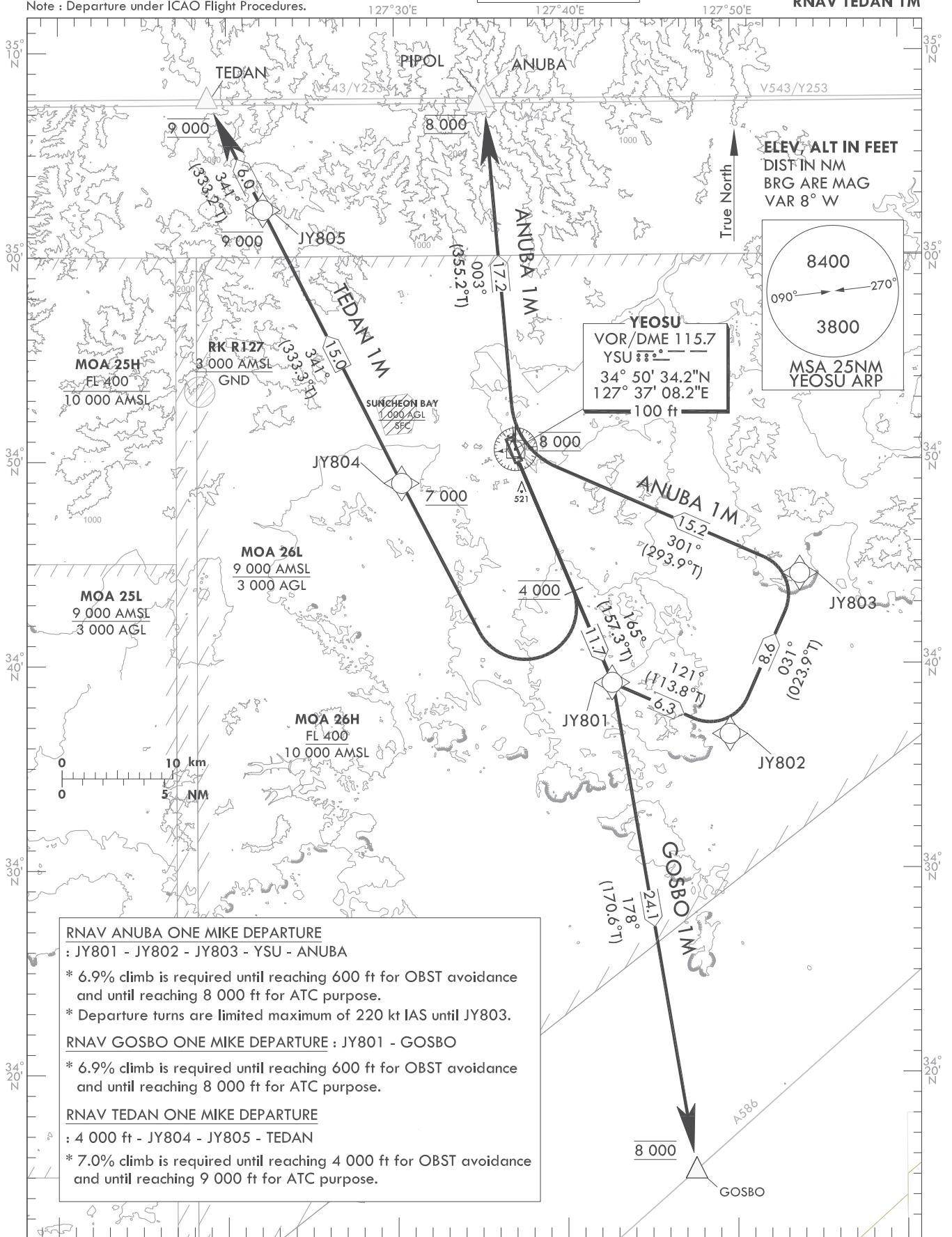
YEOSU/Yeosu (RKJY)

RWY 17

RNAV ANUBA 1M, RNAV GOSBO 1M

RNAV TEDAN 1M

Note : Departure under ICAO Flight Procedures.



RNAV ANUBA ONE MIKE DEPARTURE
: JY801 - JY802 - JY803 - YSU - ANUBA
* 6.9% climb is required until reaching 600 ft for OBST avoidance and until reaching 8 000 ft for ATC purpose.
* Departure turns are limited maximum of 220 kt IAS until JY803.

RNAV GOSBO ONE MIKE DEPARTURE : JY801 - GOSBO
* 6.9% climb is required until reaching 600 ft for OBST avoidance and until reaching 8 000 ft for ATC purpose.

RNAV TEDAN ONE MIKE DEPARTURE
: 4 000 ft - JY804 - JY805 - TEDAN
* 7.0% climb is required until reaching 4 000 ft for OBST avoidance and until reaching 9 000 ft for ATC purpose.

NOTE

1. RNAV 1 operation
2. GNSS required
3. ATS surveillance service required

Change : Information of MAG VAR and radial.

YEOSU/Yeosu (RKJY)
RWY 17
RNAV ANUBA 1M, RNAV GOSBO 1M
RNAV TEDAN 1M

AERONAUTICAL DATA TABULATION

Standard Instrument Departure Procedure Coding Tables

RNAV ANUBA 1M												
Serial Number	Path Descriptor	Waypoint Identifier	Fly-over	Course/Track °M(°T)	Distance (NM)	Turn direction	Altitude (ft)	Speed (kt)	Coordinates	VPA/TCH	Navigation specification	Remarks
001	CF	JY801	-	165(157.3)	11.7	-	-	-220	343905.5N 1274249.7E	-	RNAV 1	-
002	TF	JY802	-	121(113.8)	6.3	-	-	-220	343632.5N 1274948.6E	-	RNAV 1	-
003	TF	JY803	-	031(023.9)	8.6	-	-	-220	344425.1N 1275402.0E	-	RNAV 1	-
004	TF	YSU	-	301(293.9)	15.2	-	@8 000	-	345034.2N 1273708.2E	-	RNAV 1	-
005	TF	ANUBA	-	003(355.2)	17.2	-	@8 000	-	350745.9N 1273522.8E	-	RNAV 1	-

RNAV GOSBO 1M												
Serial Number	Path Descriptor	Waypoint Identifier	Fly-over	Course/Track °M(°T)	Distance (NM)	Turn direction	Altitude (ft)	Speed (kt)	Coordinates	VPA/TCH	Navigation specification	Remarks
001	CF	JY801	-	165(157.3)	11.7	-	-	-	343905.5N 1274249.7E	-	RNAV 1	-
002	TF	GOSBO	-	178(170.6)	24.1	-	@8 000	-	341516.8N 1274734.4E	-	RNAV 1	-

RNAV TEDAN 1M												
Serial Number	Path Descriptor	Waypoint Identifier	Fly-over	Course/Track °M(°T)	Distance (NM)	Turn direction	Altitude (ft)	Speed (kt)	Coordinates	VPA/TCH	Navigation specification	Remarks
001	CA	-	-	165(157.3)	-	-	@4 000	-	-	-	RNAV 1	-
002	DF	JY804	-	-	-	R	+7 000	-	344855.7N 1273022.5E	-	RNAV 1	-
003	TF	JY805	-	341(333.3)	15.0	-	-9 000	-	350221.9N 1272209.7E	-	RNAV 1	-
004	TF	TEDAN	-	341(333.2)	6.0	-	@9 000	-	350743.8N 1271852.1E	-	RNAV 1	-

Change : Information of Course/Track.

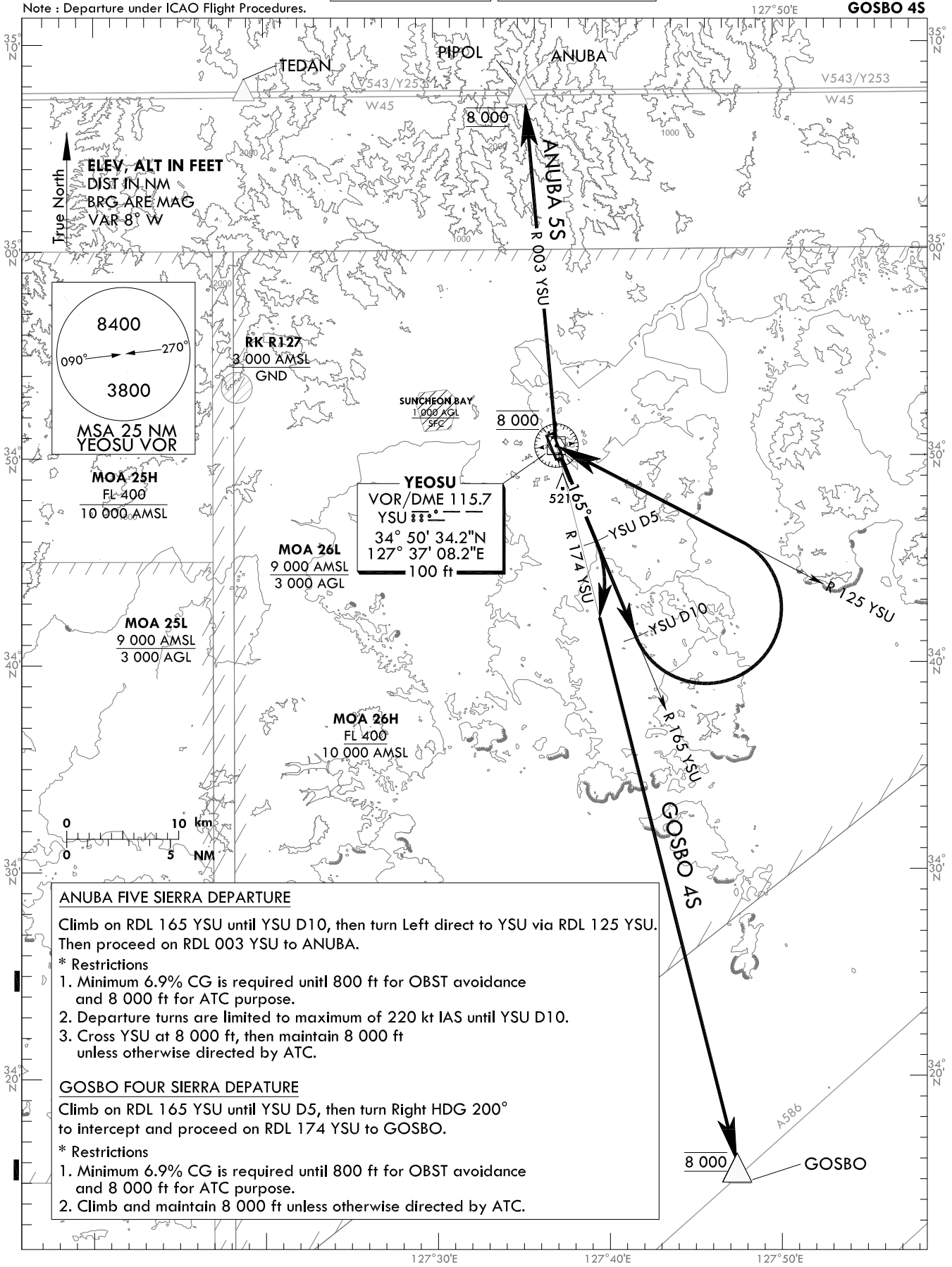
**STANDARD DEPARTURE CHART
INSTRUMENT(SID) - ICAO**

TRANSITION ALT 14 000
TRANSITION LVL FL 140

SACHEON DEP 135.4
YEOSU TWR 122.5
240.9

YEOSU/Yeosu (RKJY)
RWY 17
ANUBA 5S
GOSBO 4S

Note : Departure under ICAO Flight Procedures.



Change : Information of take off procedure.

INTENTIONALLY

LEFT

BLANK

**STANDARD DEPARTURE CHART
INSTRUMENT(SID) - ICAO**

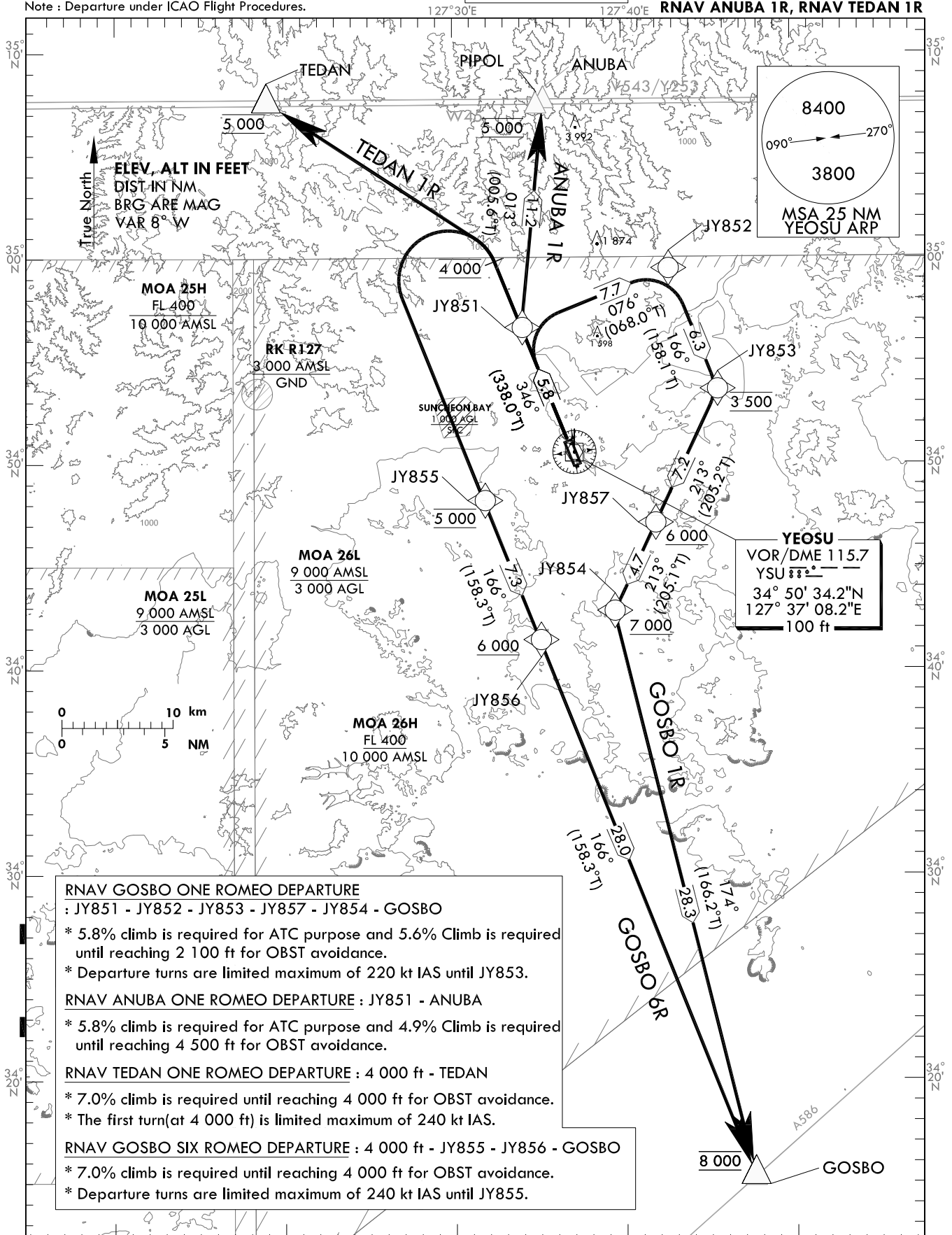
TRANSITION ALT 14 000
TRANSITION LVL FL 140

SACHEON DEP 135.4
YEOSU TWR 122.5
240.9

YEOSU/Yeosu (RKJY)
RWY 35

RNAV GOSBO 1R, RNAV GOSBO 6R
RNAV ANUBA 1R, RNAV TEDAN 1R

Note : Departure under ICAO Flight Procedures.



RNAV GOSBO ONE ROMEO DEPARTURE
: JY851 - JY852 - JY853 - JY857 - JY854 - GOSBO
* 5.8% climb is required for ATC purpose and 5.6% Climb is required until reaching 2 100 ft for OBST avoidance.
* Departure turns are limited maximum of 220 kt IAS until JY853.

RNAV ANUBA ONE ROMEO DEPARTURE : JY851 - ANUBA
* 5.8% climb is required for ATC purpose and 4.9% Climb is required until reaching 4 500 ft for OBST avoidance.

RNAV TEDAN ONE ROMEO DEPARTURE : 4 000 ft - TEDAN
* 7.0% climb is required until reaching 4 000 ft for OBST avoidance.
* The first turn(at 4 000 ft) is limited maximum of 240 kt IAS.

RNAV GOSBO SIX ROMEO DEPARTURE : 4 000 ft - JY855 - JY856 - GOSBO
* 7.0% climb is required until reaching 4 000 ft for OBST avoidance.
* Departure turns are limited maximum of 240 kt IAS.

- NOTE**
1. RNAV 1 operation
 2. GNSS required
 3. ATS surveillance service required

Change : Information of take off procedure.

YEOSU/Yeosu (RKJY)

RWY 35

RNAV GOSBO 1R, RNAV GOSBO 6R

RNAV ANUBA 1R, RNAV TEDAN 1R

AERONAUTICAL DATA TABULATION

Standard Instrument Departure Procedure Coding Tables

Serial Number	Path Descriptor	Waypoint Identifier	Fly-over	Course/Track °M(T)	Distance (NM)	Turn direction	Altitude (ft)	Speed (kt)	Coordinates	VPA/TCH	Navigation specification	Remarks
001	CF	JY851	-	346(338.0)	5.8	-	-	-220	345638.1N 1273402.9E	-	RNAV 1	-
002	TF	JY852	-	076(068.0)	7.7	-	-	-220	345931.1N 1274244.3E	-	RNAV 1	-
003	TF	JY853	-	166(158.1)	6.3	-	@3 500	-220	345337.1N 1274537.1E	-	RNAV 1	-
005	TF	JY857	-	213(205.2)	7.2	-	+6 000	-	344705.5N 1274154.0E	-	RNAV 1	-
006	TF	JY854	-	213(205.1)	4.7	-	+7 000	-	344247.3N 1273927.4E	-	RNAV 1	-
007	TF	GOSBO	-	174(166.2)	28.3	-	@8 000	-	341516.8N 1274734.4E	-	RNAV 1	-

Serial Number	Path Descriptor	Waypoint Identifier	Fly-over	Course/Track °M(T)	Distance (NM)	Turn direction	Altitude (ft)	Speed (kt)	Coordinates	VPA/TCH	Navigation specification	Remarks
001	CF	JY851	-	346(338.0)	5.8	-	-	-	345638.1N 1273402.9E	-	RNAV 1	-
002	TF	ANUBA	-	013(005.6)	11.2	-	@5 000	-	350745.9N 1273522.8E	-	RNAV 1	-

Serial Number	Path Descriptor	Waypoint Identifier	Fly-over	Course/Track °M(T)	Distance (NM)	Turn direction	Altitude (ft)	Speed (kt)	Coordinates	VPA/TCH	Navigation specification	Remarks
001	CA	-	-	346(338.0)	-	-	@4 000	-240	-	-	RNAV 1	-
002	DF	TEDAN	-	-	-	L	@5 000	-	350743.8N 1271852.1E	-	RNAV 1	-

Serial Number	Path Descriptor	Waypoint Identifier	Fly-over	Course/Track °M(T)	Distance (NM)	Turn direction	Altitude (ft)	Speed (kt)	Coordinates	VPA/TCH	Navigation specification	Remarks
001	CA	-	-	346(338.0)	-	-	@4 000	-240	-	-	RNAV 1	-
002	DF	JY855	-	-	-	L	@5 000	-240	344810.7N 1273148.2E	-	RNAV 1	-
003	TF	JY856	-	166(158.3)	7.3	-	+6 000	-	344122.6N 1273504.9E	-	RNAV 1	-
004	TF	GOSBO	-	166(158.3)	28.0	-	@8 000	-	341516.8N 1274734.4E	-	RNAV 1	-

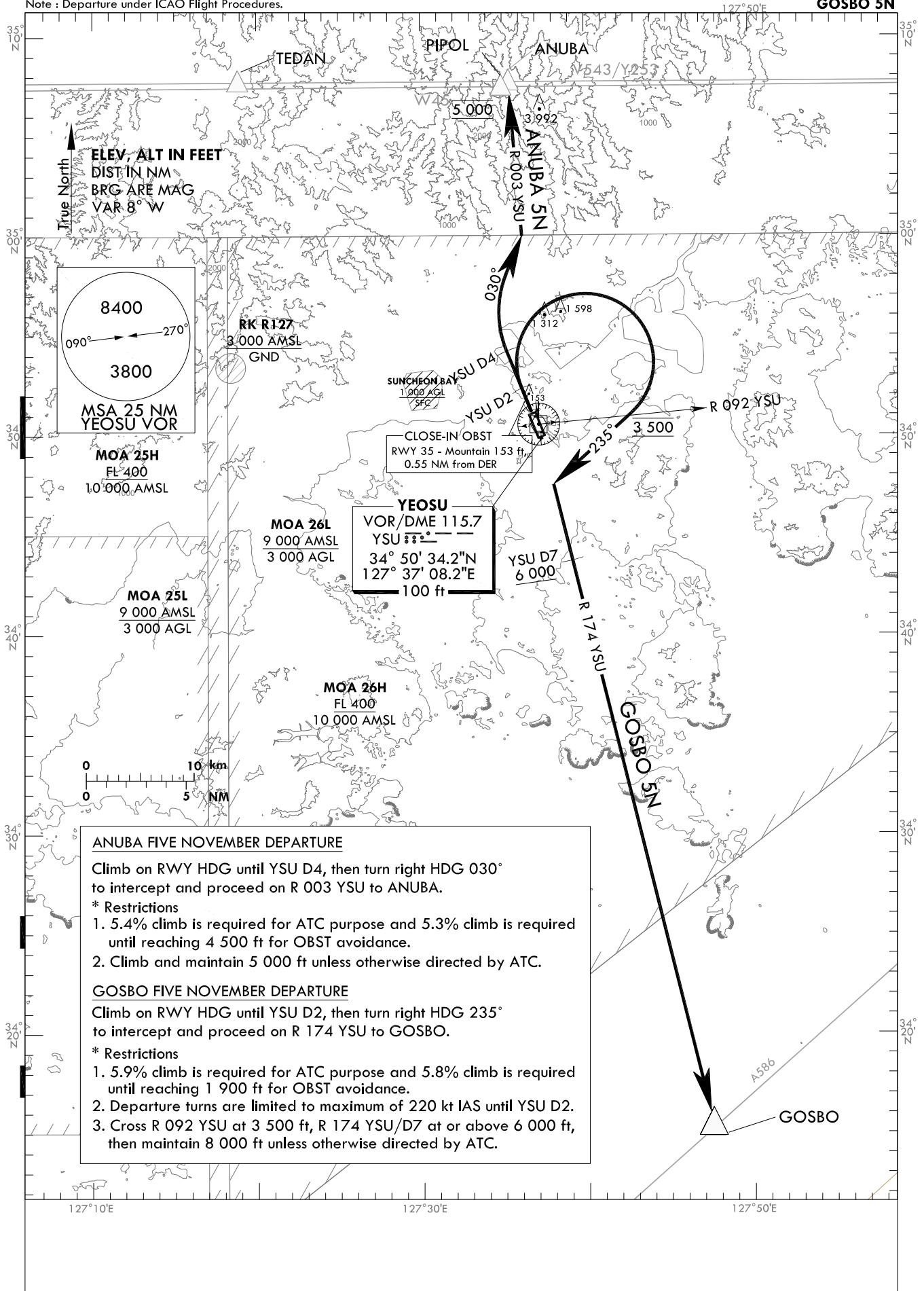
**STANDARD DEPARTURE CHART
INSTRUMENT(SID) - ICAO**

TRANSITION ALT 14 000
TRANSITION LVL FL 140

SACHEON DEP 135.4
YEOSU TWR 122.5
240.9

YEOSU/Yeosu (RKJY)
RWY 35
ANUBA 5N
GOSBO 5N

Note : Departure under ICAO Flight Procedures.



ANUBA FIVE NOVEMBER DEPARTURE
Climb on RWY HDG until YSU D4, then turn right HDG 030° to intercept and proceed on R 003 YSU to ANUBA.
* Restrictions
1. 5.4% climb is required for ATC purpose and 5.3% climb is required until reaching 4 500 ft for OBST avoidance.
2. Climb and maintain 5 000 ft unless otherwise directed by ATC.

GOSBO FIVE NOVEMBER DEPARTURE
Climb on RWY HDG until YSU D2, then turn right HDG 235° to intercept and proceed on R 174 YSU to GOSBO.
* Restrictions
1. 5.9% climb is required for ATC purpose and 5.8% climb is required until reaching 1 900 ft for OBST avoidance.
2. Departure turns are limited to maximum of 220 kt IAS until YSU D2.
3. Cross R 092 YSU at 3 500 ft, R 174 YSU/D7 at or above 6 000 ft, then maintain 8 000 ft unless otherwise directed by ATC.

Change : Information of close in OBST and takeoff procedure.

INTENTIONALLY

LEFT

BLANK